

## CERTIFICATE OF ANALYSIS

### Product Information

<b>Product Name:</b>	SS-31
<b>Lot No.:</b>	VI3520260112-50
<b>Sequence:</b>	D-Arg- dimethylTyr -Lys-Phe
<b>Modifications:</b>	C-Terminal Amide; Dmt=2',6'-dimethylTyr

### Quality Control

Test Items	Specifications	Results
<b>Appearance</b>	White to off-white lyophilized powder	White to off-white lyophilized powder (Conforms)
<b>Molecular Weight (MS)</b>	639.75±1.0 Da	639.80 Da
<b>Purity by HPLC</b>	>98%	99.8%
<b>Retention Time (HPLC)</b>	±0.2min of Standard	Conforms
<b>Assay</b>	80.0%~ 120.0%	111.4%
<b>Solubility</b>	50 mg/1ml H <sub>2</sub> O	Clearly soluble
<b>Acetic acid content</b>	≤25.0%	18.6%
<b>TFA Content</b>	≤0.500%	Conforms
<b>DCM Content</b>	≤0.060%	0.002%
<b>DMF Content</b>	≤0.088%	N.D.
<b>Total Aerobic Count</b>	≤100CFU/g	Conforms
<b>Yeast &amp; Molds Count</b>	≤100CFU/g	Conforms
<b>Endotoxins</b>	≤0.5EU/mg	Conforms

**Storage Conditions:** -20°C.

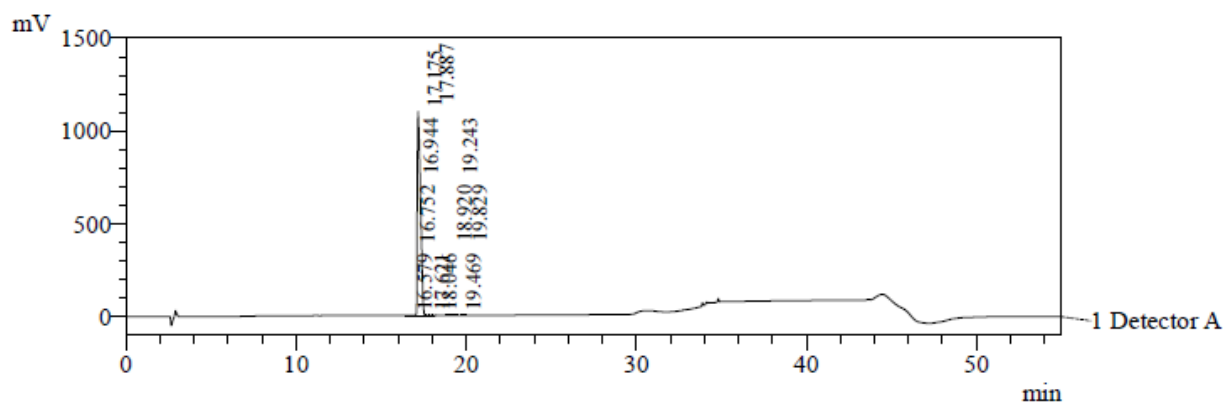
Date of Mfg: 12 Jan 2026

Sample Information

Lot. No	VI3520260112-50
Pump A	0.1% trifluoroacetic in 100% water
Pump B	0.1% trifluoroacetic in 100% acetonitrile
Total Flow	0.8ml/min
Wavelength	220nm
Analytical column type	Thermo Scientific Acclaim TM 300 C18 (4.6*150mm*3um)
Dissolution method	100%H <sub>2</sub> O
Acquisition Time	2026/01/14 19:37:35
Inj. Volume	10ul

Time	Module	Action	Value
0.01	Pumps	B.Conc	7
25.00	Pumps	B.Conc	32
30.00	Pumps	B.Conc	90
40.00	Pumps	B.Conc	90
41.00	Pumps	B.Conc	7
55.00	Controller	Stop	

Chromatogram



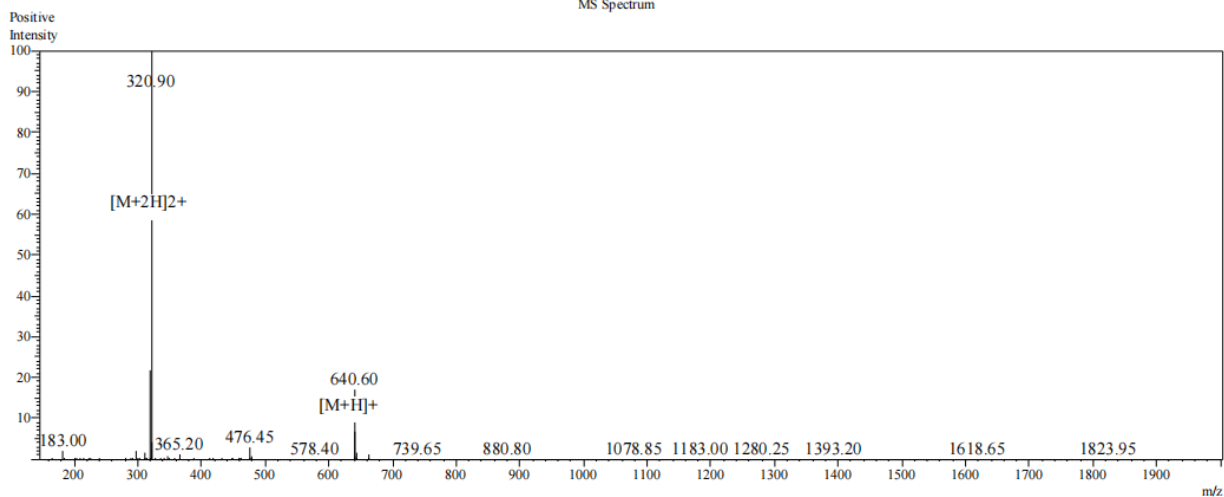
1 Detector A / 220nm

PeakTable

Detector A 220nm

Peak#	Ret. Time	Area	Height	Area %
1	16.579	2650	447	0.018
2	16.752	340	53	0.002
3	16.944	1535	284	0.011
4	17.175	14543652	1096468	99.835
5	17.621	5021	1008	0.034
6	17.887	1904	238	0.013
7	18.046	502	70	0.003
8	18.920	5615	858	0.039
9	19.243	4228	587	0.029
10	19.469	665	146	0.005
11	19.829	1624	307	0.011
Total		14567735	1100465	100.000

MS Spectrum



Sample Information		Interface	:ESI	Prerod Bias	:+4.5kv
Dissolution method	:3%HAC+25%ACN+72%H <sub>2</sub> O	Nebulizing Gas Flow	:1.50L/min	Detector	:-0.2kv
Date Acquired	: 2026/1/15 11:43:41	CDL Temp	:250C	T.Flow	:0.2ml/min
Injection Volume	: 1ul	CDL Volt	:0v	B.conc	:30%H <sub>2</sub> O/70%MeOH
		Block Temp	:200		

Lot No.	VI3520260112-50
Theoretical	639.75
Observed	639.80