

CERTIFICATE OF ANALYSIS

Product Information

Product Name:	N-acetyl Semax
Lot No.:	VI1620250313-25
Sequence:	Met-Glu-His-Phe-Pro-Gly-Pro
Modifications:	N-Terminal Acetyl

Quality Control

Test Items	Specifications	Results
Appearance	White to off-white lyophilized powder	White to off-white lyophilized powder (Conforms)
Molecular Weight (MS)	855.97±1.0 Da	856.00 Da
Purity by HPLC	>98%	99.0%
Retention Time (HPLC)	±0.2min of Standard	Conforms
Assay	80.0% ~ 120.0%	112.5%
Solubility	25 mg/1ml H ₂ O	Clearly soluble
Loss on Drying	≤10.0%	2.7%
Water Content	≤8.0%	2.7%
Visible Particulate Matter	The sampling inspection results meet the requirements of AQL 0.65%	Conforms
Subvisible Particulate Matter	≤6000 counts/container ≥10um ≤600 counts/container ≥25um	Conforms
Content Uniformity	AV ≤15.0	Conforms
Acetic Acid Content	≤12.0%	1.4%
TFA Content	≤0.500%	Conforms
DCM Content	≤0.060%	0.002%
DMF Content	≤0.088%	N.D.
Total Aerobic Count	≤100CFU/g	Conforms
Yeast & Molds Count	≤100CFU/g	Conforms
Endotoxins	≤0.5EU/mg	Conforms

Storage Conditions: -20°C.

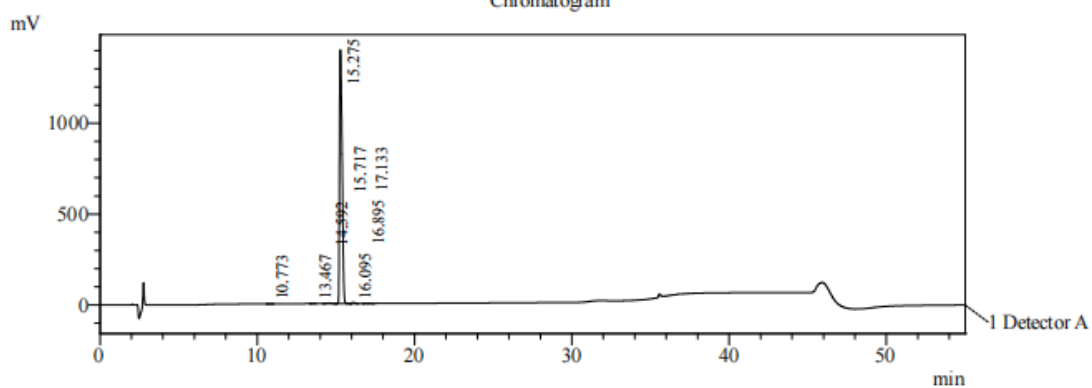
Date of Mfg: 13 Mar 2026

Sample Information

Lot. No	VI1620260313-25
Pump A	0.1% trifluoroacetic in 100% water
Pump B	0.1% trifluoroacetic in 100% acetonitrile
Total Flow	0.8ml/min
Wavelength	220nm
Analytical column type	Phenomenex Luna 3um C18 (2) (4.6*150mm*3um)
Dissolution method	100%H ₂ O
Acquisition Time	2026/03/16 03:47:15
Inj. Volume	12ul

Time	Module	Action	Value
0.01	Pumps	B.Conc	15
25.00	Pumps	B.Conc	40
30.00	Pumps	B.Conc	90
40.00	Pumps	B.Conc	90
41.00	Pumps	B.Conc	15
55.00	Controller	Stop	

Chromatogram

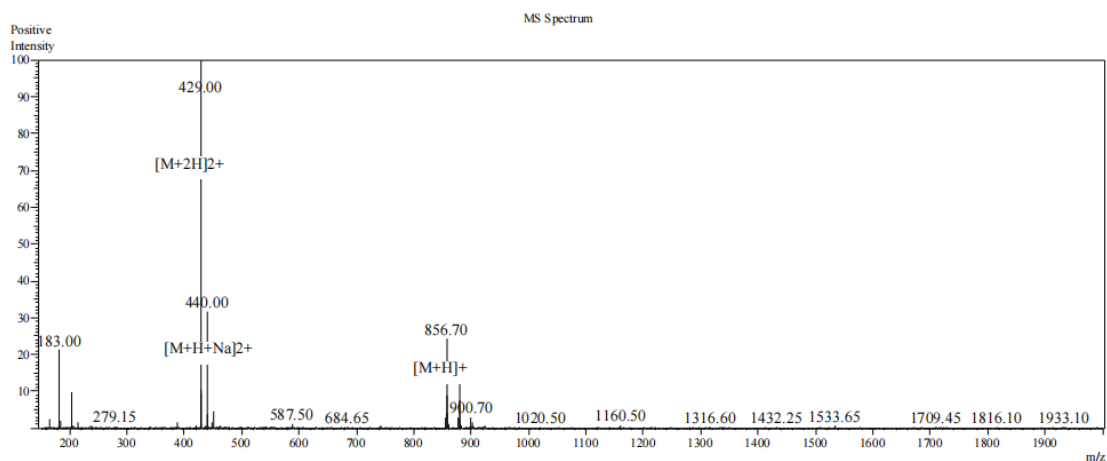


1 Detector A / 220nm

PeakTable

Detector A 220nm

Peak#	Ret. Time	Area	Height	Area %
1	10.773	5376	605	0.033
2	13.467	2662	288	0.016
3	14.592	66140	3555	0.403
4	15.275	16249911	1396020	98.991
5	15.717	6108	886	0.037
6	16.095	71308	6054	0.434
7	16.895	11242	1133	0.068
8	17.133	2764	294	0.017
Total		16415510	1408834	100.000



Sample Information		Interface	:ESI	Prerod Bias	:+4.5kv
Dissolution method	:3%HAC+25%ACN+72%H2O	Nebulizing Gas Flow	:1.50L/min	Detector	:-0.2kv
Date Acquired	: 2026/3/16 10:39:22	CDL Temp	:250C	T.Flow	:0.2ml/min
Injection Volume	: 1ul	CDL Volt	:0v	B.conc	:30%H2O/70%MeOH
		Block Temp	:200		

Lot No.	VI1620260313-25
Theoretical	855.97
Observed	856.00