

CERTIFICATE OF ANALYSIS

Product Information

Product Name:	CJC-1295 Acetate
Lot No.:	VI320260410-5
Sequence:	Tyr-D-Ala-Asp-Ala-Ile-Phe-Thr-Gln-Ser-Tyr-Arg-Lys-Val-Leu-Ala-Gln-Leu-Ser-Ala-Arg-Lys-Leu-Leu-Gln-Asp-Ile-Leu-Ser-Arg
Modifications:	C-Terminal Amide

Quality Control

Test Items	Specifications	Results
Appearance	White to off-white lyophilized powder	White to off-white lyophilized powder (Conforms)
Molecular Weight (MS)	3367.94±1.0 Da	3368.50 Da
Purity by HPLC	>98%	99.0%
Retention Time (HPLC)	±0.2min of Standard	Conforms
Assay	80.0% ~ 120.0%	115.7%
Solubility	5 mg/1ml H ₂ O	Clearly soluble
Loss on Drying	≤10.0%	2.4%
Water Content	≤8.0%	2.4%
Visible Particulate Matter	The sampling inspection results meet the requirements of AQL 0.65%	Conforms
Subvisible Particulate Matter	≤6000 counts/container ≥10um ≤600 counts/container ≥25um	Conforms
Content Uniformity	AV ≤15.0	Conforms
Acetic Acid Content	≤12.0%	0.1%
TFA Content	≤0.500%	Conforms
DCM Content	≤0.060%	0.003%
DMF Content	≤0.088%	N.D.
Total Aerobic Count	≤100CFU/g	Conforms
Yeast & Molds Count	≤100CFU/g	Conforms
Endotoxins	≤0.5EU/mg	Conforms

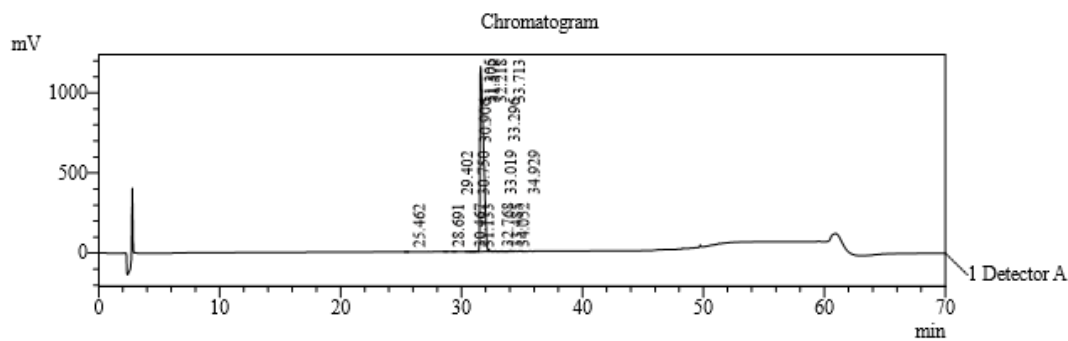
Storage Conditions: -20°C.

Date of Mfg: 10 Apr 2026

Sample Information

Lot. No	VI320260410-5
Pump A	0.1% trifluoroacetic in 100% water
Pump B	0.1% trifluoroacetic in 100% acetonitrile
Total Flow	0.8ml/min
Wavelength	220nm
Analytical column type	Phenomenex Luna 3um C18 (2) (4.6*150mm*3um)
Dissolution method	100%H ₂ O
Acquisition Time	2026/04/12 12:05:55
Inj. Volume	30ul

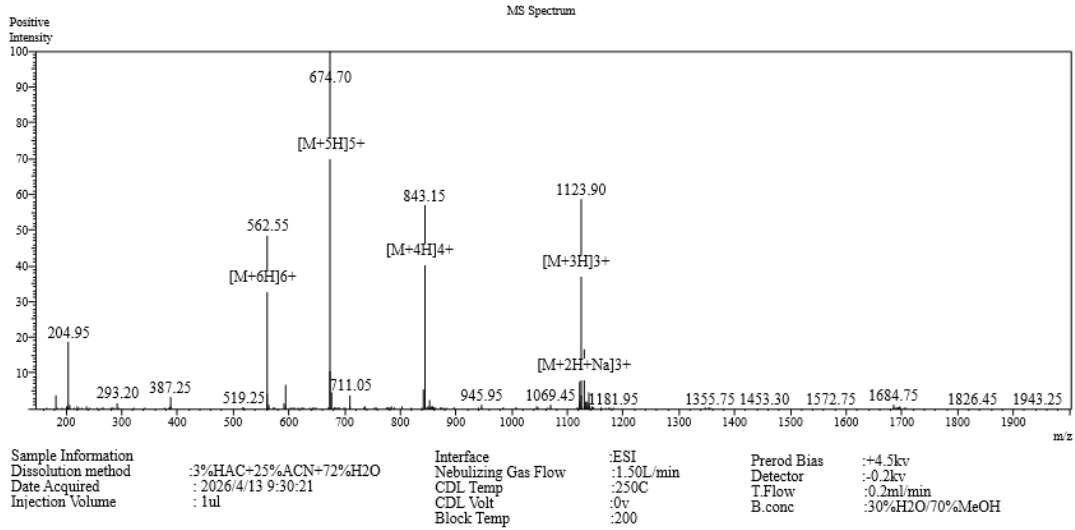
Time	Module	Action	Value
0.01	Pumps	B.Conc	20
40.00	Pumps	B.Conc	45
45.00	Pumps	B.Conc	90
55.00	Pumps	B.Conc	90
56.00	Pumps	B.Conc	20
70.00	Controller	Stop	



1 Detector A / 220nm

PeakTable

Peak#	Ret. Time	Area	Height	Area %
1	25.462	3378	487	0.014
2	28.691	4654	654	0.019
3	29.402	5642	766	0.023
4	30.467	4220	289	0.018
5	30.750	2775	374	0.012
6	30.906	4760	610	0.020
7	31.133	2189	306	0.009
8	31.305	15627	2015	0.065
9	31.579	23798327	1155634	98.975
10	32.218	99748	11797	0.415
11	32.768	28442	3419	0.118
12	33.019	5684	676	0.024
13	33.296	18880	2109	0.079
14	33.485	3859	588	0.016
15	33.713	3059	469	0.013
16	34.052	33680	2409	0.140
17	34.929	9781	931	0.041
Total		24044704	1183533	100.000



Lot No.	VI320260410-5
Theoretical	3367.94
Observed	3368.50