

## CERTIFICATE OF ANALYSIS

### Product Information

<b>Product Name:</b>	BPC-157 + Thymosin Beta-4 Acetate + GHK-Cu
<b>Lot No.:</b>	VI(2+20+6)20260306-70
<b>Sequence:</b>	BPC-157 10mg + Thymosin Beta-4 Acetate 10mg + GHK-Cu 50mg
<b>Modifications:</b>	N/A

### Quality Control

Test Items	Specifications	Results
<b>Appearance</b>	Blue to off- Blue lyophilized powder	White to off-white lyophilized powder (Conforms)
<b>Molecular Weight (MS)</b>	1419.55±1.0 Da, 4963.51±1.0 Da, 401.91±1.0 Da	1418.70 Da, 4964.00 Da, 340.20 (401.91-Cu <sup>2+</sup> ) Da
<b>Purity by HPLC</b>	>98%	99.8%
<b>Retention Time (HPLC)</b>	±0.2min of Standard	Conforms
<b>Assay</b>	80.0% ~ 120.0%	112.8%
<b>Solubility</b>	70 mg/1ml H <sub>2</sub> O	Clearly soluble
<b>Acetic Acid Content</b>	N/A	N/A
<b>TFA Content</b>	N/A	N/A
<b>DCM Content</b>	≤0.060%	0.002%
<b>DMF Content</b>	≤0.088%	0.010%
<b>Total Aerobic Count</b>	≤100CFU/g	Conforms
<b>Yeast &amp; Molds Count</b>	≤100CFU/g	Conforms
<b>Endotoxins</b>	≤0.5EU/mg	Conforms

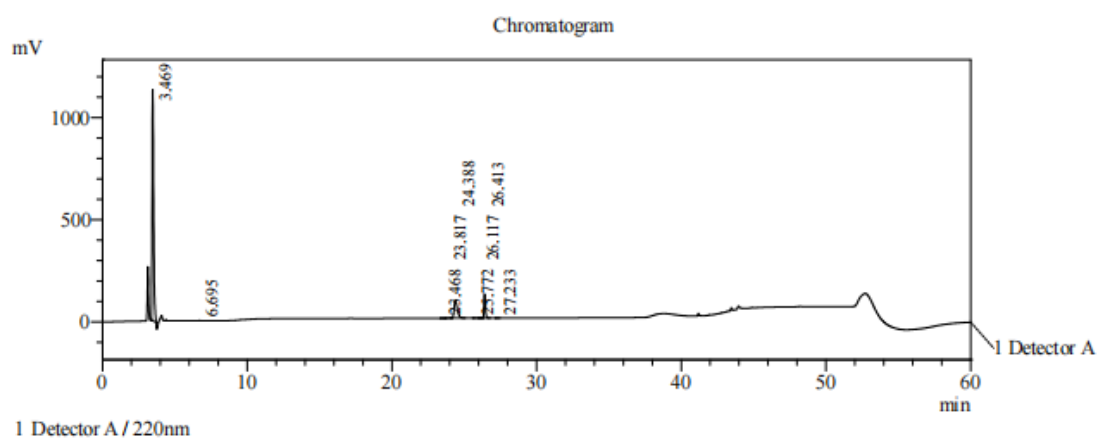
**Storage Conditions:** -20°C.

Date of Mfg: 06 Mar 2026

Sample Information

Lot. No	VI(2+20+6)20260306-70
Pump A	0.1% trifluoroacetic in 100% water
Pump B	0.1% trifluoroacetic in 100% acetonitrile
Total Flow	0.6ml/min
Wavelength	220nm
Analytical column type	Phenomenex Luna 3um C18 (2) (4.6*150mm*3um)
Dissolution method	100%H <sub>2</sub> O
Acquisition Time	2026/03/08 17:15:06
Inj. Volume	10ul

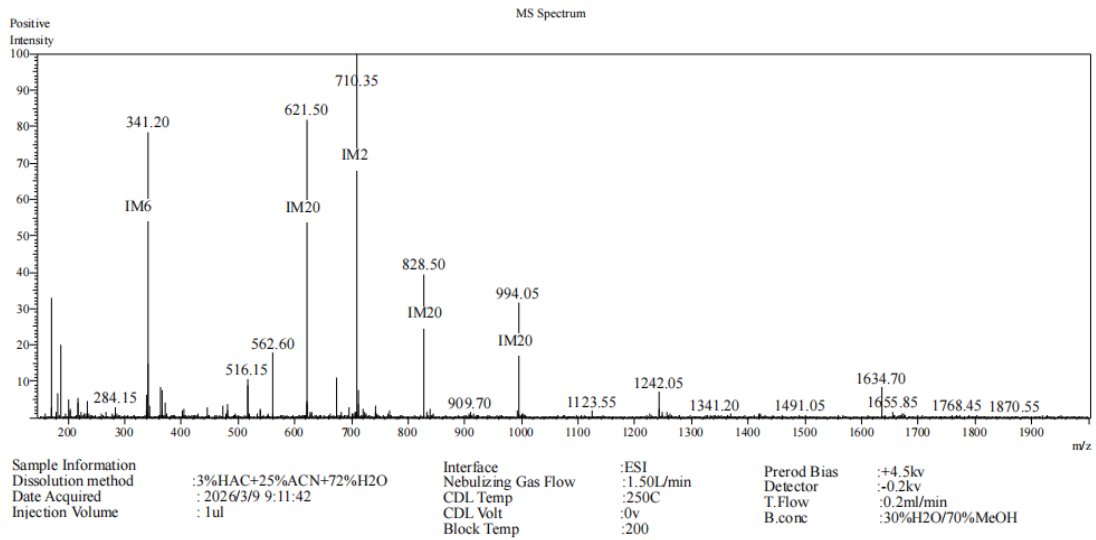
Time	Module	Action	Value
0.01	Pumps	B.Conc	4
30.00	Pumps	B.Conc	34
35.00	Pumps	B.Conc	90
45.00	Pumps	B.Conc	90
46.00	Pumps	B.Conc	4
60.00	Controller	Stop	



PeakTable

Detector A 220nm

Peak#	Ret. Time	Area	Height	Area %
1	3.469	7948695	1130520	78.637
2	6.695	9247	1124	0.091
3	23.468	2150	324	0.021
4	23.817	3011	218	0.030
5	24.388	1325712	87555	13.115
6	25.772	5898	490	0.058
7	26.117	2308	270	0.023
8	26.413	809857	117229	8.012
9	27.233	1155	178	0.011
Total		10108033	1337908	100.000



Lot No.	VI(2+20+6)20260306-70
Theoretical	1419.55 + 4963.51 + 401.91
Observed	1418.70 + 4964.00 + 340.20(401.91-Cu2 <sup>+</sup> )