

**CERTIFICATE OF ANALYSIS**

**Product Information**

<b>Product Name:</b>	BPC-157 + Thymosin Beta-4 Acetate
<b>Lot No.:</b>	VI(2+20)20260115-10
<b>Sequence:</b>	BPC-157 5mg + Thymosin Beta-4 Acetate 5mg
<b>Modifications:</b>	N/A

**Quality Control**

<b>Test Items</b>	<b>Specifications</b>	<b>Results</b>
<b>Appearance</b>	White to off-white lyophilized powder	White to off-white lyophilized powder (Conforms)
<b>Molecular Weight (MS)</b>	1419.55±1.0 Da, 4963.51±1.0 Da	1418.80 Da, 4964.40 Da
<b>Purity by HPLC</b>	>98%	98.2%
<b>Retention Time (HPLC)</b>	±0.2min of Standard	Conforms
<b>Assay</b>	80.0%~ 120.0%	117.5%
<b>Solubility</b>	10 mg/1ml H <sub>2</sub> O	Clearly soluble
<b>Acetic acid content</b>	N/A	N/A
<b>TFA Content</b>	N/A	N/A
<b>DCM Content</b>	≤0.060%	N.D.
<b>DMF Content</b>	≤0.088%	N.D.
<b>Total Aerobic Count</b>	≤100CFU/g	Conforms
<b>Yeast &amp; Molds Count</b>	≤100CFU/g	Conforms
<b>Endotoxins</b>	≤0.5EU/mg	Conforms

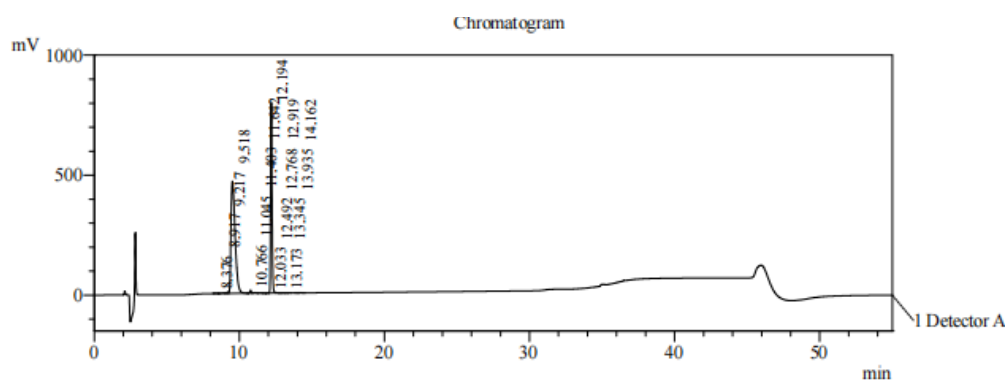
**Storage Conditions:** -20°C.

Date of Mfg: 15 Jan 2026

Sample Information

Lot. No	VI(2+20)20260115-10
Pump A	0.1% trifluoroacetic in 100% water
Pump B	0.1% trifluoroacetic in 100% acetonitrile
Total Flow	0.8ml/min
Wavelength	220nm
Analytical column type	Phenomenex Luna 3um C18 (2) (4.6*150mm*3um)
Dissolution method	100%H <sub>2</sub> O
Acquisition Time	2026/01/17 12:10:18
Inj. Volume	20ul

Time	Module	Action	Value
0.01	Pumps	B.Conc	15
25.00	Pumps	B.Conc	45
30.00	Pumps	B.Conc	90
40.00	Pumps	B.Conc	90
41.00	Pumps	B.Conc	15
55.00	Controller	Stop	

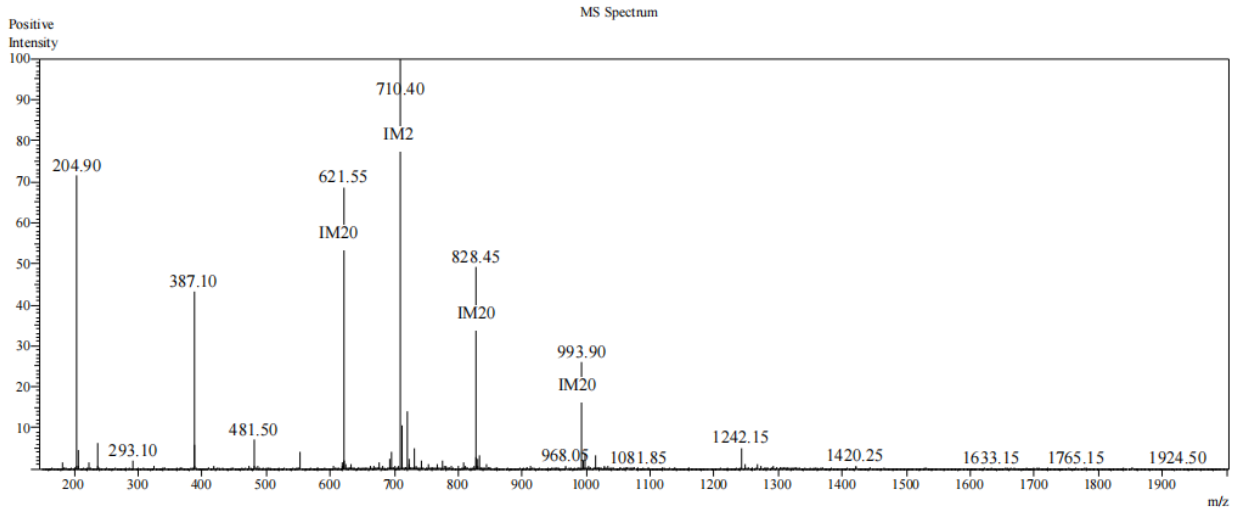


PeakTable

Detector A 220nm

Peak#	Ret. Time	Area	Height	Area %
1	8.376	8823	1004	0.059
2	8.917	34798	2034	0.233
3	9.217	44614	5138	0.298
4	9.518	9211154	467113	61.597
5	10.766	82229	13248	0.550
6	11.045	34036	2376	0.228
7	11.403	17907	1264	0.120
8	11.642	3312	446	0.022
9	12.033	6875	947	0.046
10	12.194	5470365	793535	36.581
11	12.492	6143	1135	0.041
12	12.768	3021	450	0.020
13	12.919	5096	716	0.034
14	13.173	2833	398	0.019
15	13.345	2052	202	0.014
16	13.935	6311	714	0.042
17	14.162	14408	1270	0.096

Peak#	Ret. Time	Area	Height	Area %
Total		14953975	1291989	100.000



Sample Information		Interface	:ESI	Prerod Bias	:+4.5kv
Dissolution method	:3%HAC+25%ACN+72%H2O	Nebulizing Gas Flow	:1.50L/min	Detector	:-0.2kv
Date Acquired	: 2026/1/19 10:23:22	CDL Temp	:250C	T.Flow	:0.2ml/min
Injection Volume	: 1ul	CDL Volt	:0v	B.conc	:30%H2O/70%MeOH
		Block Temp	:200		

Lot No.	VI(2+20)20260115-10
Theoretical	1419.55 + 4963.51
Observed	1418.80 + 4964.40